

Catalogue





Heat, light & UV

The SOLAR RAPTOR HID-Lamps are the optimal complete solution for day-active terrarium animals that require sun-like light with UV radiation and heat. The modern UV high-pressure metal vapor lamps reach the natural range of the sun with around 70000 lux. This is a much higher value than is the case with fluorescent tubes, mixed light lamps and halogen spotlights. Sun-loving reptiles are almost attracted to the light and enjoy the sunny warmth.



SOLAR RAPTOR® HID UV-Lamps

	Spot 35 W	Flood 35 W	Spot 50 W	Spot 70 W	Flood 70 W	Flood 150 W
Item no.	00010009	00010008	00010007	00010003	00010005	00010006
Power	35 watts	35 watts	50 watts	70 watts	70 watts	150 watts
Design	PAR20	PAR30	PAR30	PAR30	PAR38	PAR38
Beam angle	24°	23.6°	23.6°	23.6°	36.4°	36.4°
Colour temp.	≈ 5000 K	≈ 5000 K	≈ 5000 K	≈ 5000 K	≈ 5000 K	≈ 5000 K
Luminous flux	1,250 lm	1,600 lm	2,200 lm	3,370 lm	3,770 lm	8,000 lm
CRI	Ra 51	Ra 49	Ra 64	Ra 66	Ra 73	Ra 85
Size	Ø 63 / H 87 mm	Ø 95 / H 119 mm	Ø 95 / H 119 mm	Ø 95 / H 119 mm	Ø 120 / H 134 mm	Ø 120 / H 134 mm
Weight	0.070 kg	0.120 kg	0.120 kg	0.120 kg	0.172 kg	0.172 kg
Operating temp.	≈ 145 °C	≈ 90 °C	≈ 110 °C	≈ 130 °C	≈ 115 °C	≈ 155 °C

Technical data HID-Lamp



- Suitable for any E27 socket (thermostable)
- The integrated reflector increases light rendition
- Ideal for vital vitamin D3 synthesis
- High frequency - therefore flicker-free
- A ballast (ECG) is required for operation

Operating voltage	220 – 240 Volt AC	Ballast/Driver	ECG
Input frequency	50 – 60 Hz	Dimmable	No
Ambient temp.	–10 – +40 °C	Socket/base	E27
Product colour	Silver	Operating voltage	90 V
Housing material	Aluminium	Ignition voltage	3000 – 5000 V
Cover lens	Glass	Class of protection	IP 20

The SOLAR RAPTOR® HID lamp may only be operated with a suitable operating unit (E27, thermostable). Our SOLAR RAPTOR® ClampLamp is ideal for this purpose.

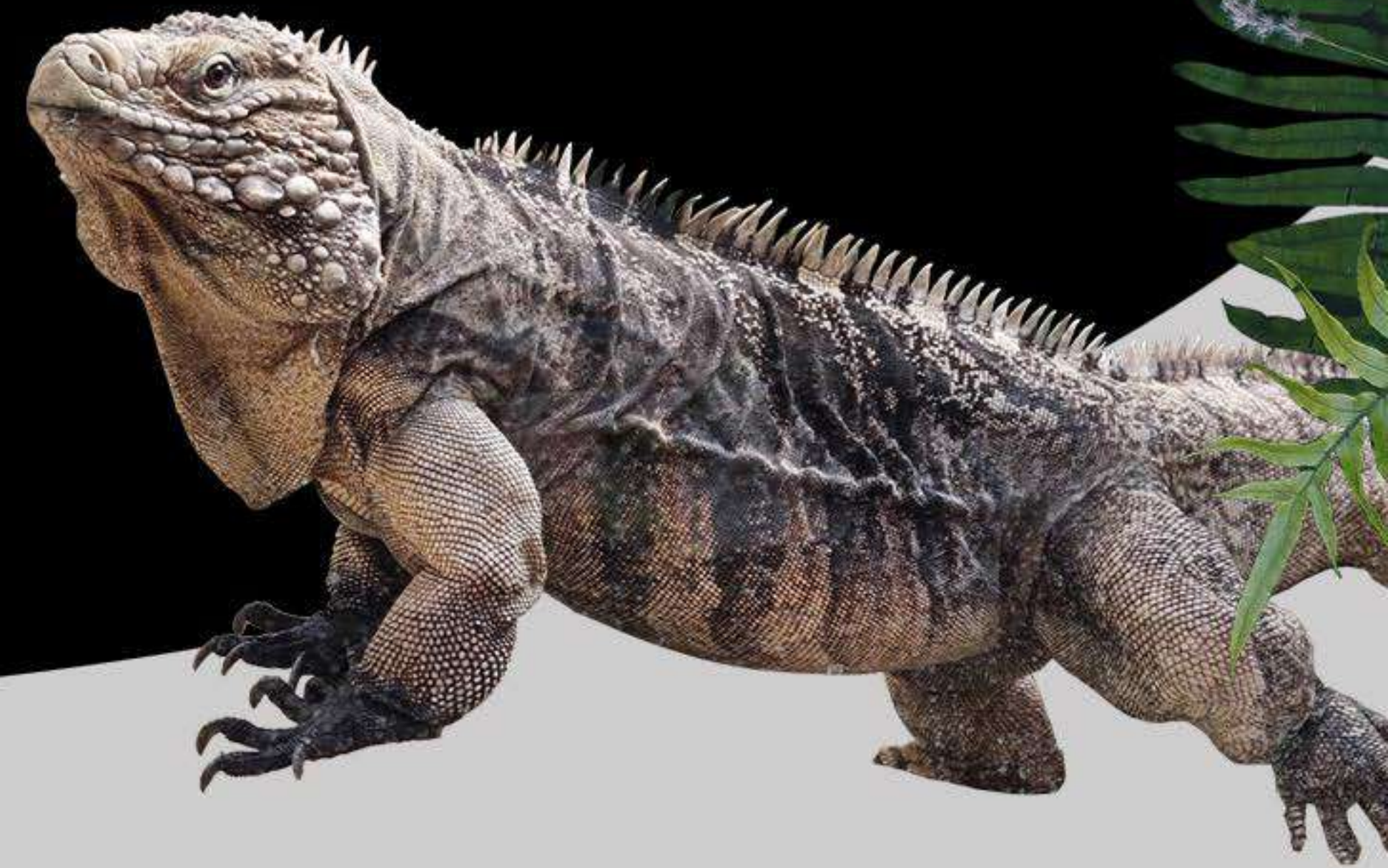


Technical data HID-Lamp



Ballast for terrarium lamps

The ECG is completely ready for connection and fitted with the popular SOLAR RAPTOR connectors. With these plugs, it can also be quickly and easily combined with the Reptile ClampLamps. It can also be connected to any standard terrarium socket and this SOLAR RAPTOR product also puts safety first. The ignition cable is made of heat-resistant silicone and the aluminum housing generates very little heat.



SOLAR RAPTOR® ECG

	EVG 35 W	EVG 50 W	EVG 70 W	EVG 150 W
Item no.	00010179	00010180	00010181	00010182
Nominal power	35 watts	50 watts	70 watts	150 watts
Input AC	50 – 60 Hz	50 – 60 Hz	50 – 60 Hz	50 – 60 Hz
Ignition voltage	3 – 5 kV	3 – 5 kV	3 – 5 kV	3 – 5 kV
Input power	43 watts	58 watts	80 watts	155 watts
Output current	190 mA	260 mA	350 mA	700 mA
CosPhi	≥ 0.99	≥ 0.99	≥ 0.99	≥ 0.99
Dimensions	110 x 77 x 32 mm	110 x 77 x 32 mm	110 x 77 x 32 mm	156 x 98 x 42 mm
Weight	0.55 kg	0.55 kg	0.55 kg	0.77 kg
Class of protection	IP 20	IP 20	IP 20	IP 20

Technical data ECG





Multi-Watt ECG

The SOLAR RAPTOR® Multi-Watt ECG is an electronic ballast for terrarium spotlights that offers three different wattages in just one device. It can be set to a lamp output of 35W, 50W or 70W and therefore offers maximum flexibility.

Like the SOLAR RAPTOR® ECGs with fixed output, the Multi-Watt ECG also arrives completely ready for connection and is fitted with the practical SOLAR RAPTOR® connecting plugs. With these plugs, it can be quickly and easily combined with the Reptile ClampLamps. Of course, it can also be connected to any other standard terrarium socket.



SOLAR RAPTOR® Multi-Watt ECG



- Multi-ECG Electronic ballast
- 35 watt, 50 watt or 70 watt output
- Simply select the required power level using the switch
- Completely ready for connection with connecting plugs

Input voltage	110 – 240 V	Item Nr.	00013738
Input frequency	50 – 60 Hz	Weight	702 g
Ignition voltage	≤ 5 kV	Length	184 mm
Output voltage	250 V	Width	69 mm
Output frequency	130 Hz	Height	42 mm
Specified lamp wattage of the ballast	35 – 70 W	Protection class	IP 20

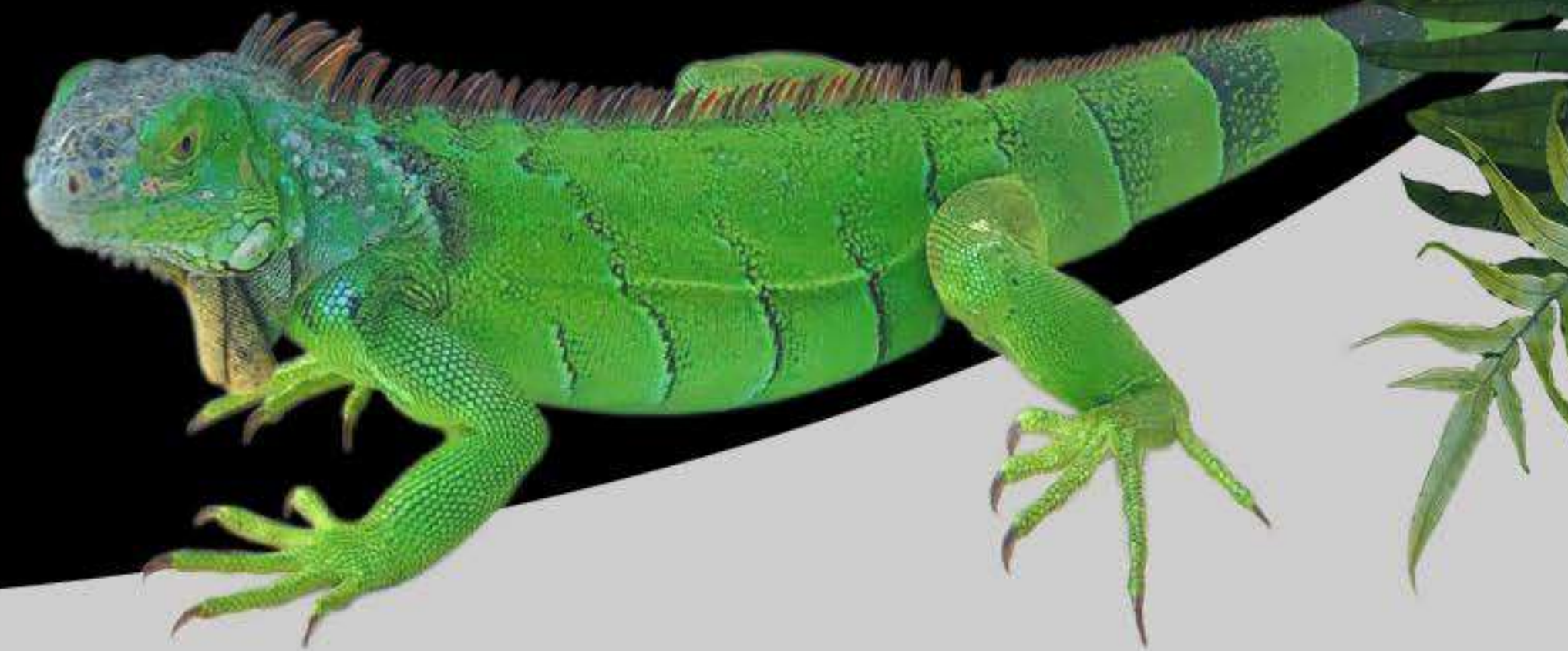
Technical data Multi-Watt ECG





Wide UVA & UVB spectrum

The SOLAR RAPTOR® UV mixed light lamp is a UV lamp for terrariums. It provides the animals with natural light and a broad UVA/UVB spectrum. It also emits pleasant warmth and ensures higher temperatures in the terrarium. The powerful mixed light lamp (MVL, Mercury Vapor Lamp) is available in various wattages and is also the right choice for larger desert and steppe terrariums. The integrated reflector increases the light output many times over. The tempered glass used prevents dust from burning into the spotlight and retaining radiation.



SOLAR RAPTOR® UV Mercury Vapor Lamp

	80 W	100 W	160 W
Item no.	00010598	00010257	00010258
Power	80 watts	100 watts	160 watts
Design	PAR38	PAR38	PAR38
Beam angle	45°	45°	45°
Colour temp.	≈ 3800 K	≈ 3900 K	≈ 4800 K
Luminous flux	380 lm	700 lm	2030 lm
CRI	Ra > 65	Ra > 63	Ra > 48
Size	Ø120 x 144 mm	Ø120 x 144 mm	Ø120 x 144 mm
Weight	0.108 kg	0.108 kg	0.108 kg

Technical data UV Mercury Vapor Lamp



- Suitable for any E27 socket (thermostable)
 - No external ballast required
 - For perfect and detailed illumination
- Increases the temperature in the terrarium
 - The integrated reflector increases light rendition

Operating voltage	220 – 240 Volt AC	Ballast / driver	not required
Input frequency	50 – 60 Hz	Dimmable	no
Ambient temp.	–10 – +40 °C	Socket / base	E27
Product colour	Silver	Protection class	IP 20
Housing material	Glass	Beam angle	45°

Thanks to the good UVA and UVB components, the SOLAR RAPTOR® UV mixed light emitter supports vital D3 synthesis. UVB is important for vitamin D3 synthesis and thus for the bone and shell structure of reptiles. UVA is elementary for the well-being, increases appetite, activity and reproductive behavior of reptiles.

Technical data UV Mercury Vapor Lamp





A warming place with healthy UV-A light

The halogen spots from SOLAR RAPTOR® produce a pleasant heat radiation and at the same time provide optimum light that makes the animals feel as if they are in the wild, while a very good color rendering index (CRI) of $> Ra\ 99$ ensures true-to-life reproduction of the colors of the terrarium inhabitants and they are optimally supported with vital UV-A. With this sensationally high color rendering index, reptiles can “blossom” in all their colorful glory and the UV halogen spots create bright and warm places for sunbathing.



SOLAR RAPTOR® UV Halogen Spot

	35 W Spot	50 W Spot	75 W Spot	100 W Spot
Item no.	00013497	00013498	00013499	00013500
Power	35 watts	50 watts	75 watts	100 watts
Design	PAR20	PAR20	PAR30L	PAR30L
Beam angle	30°	30°	36°	36°
Colour temp.	≈ 2700 K	≈ 2700 K	≈ 2800 K	≈ 2800 K
Luminous flux	320 lm	495 lm	900 lm	1000 lm
CRI	Ra > 99	Ra > 99	Ra > 99	Ra > 99
Size	Ø 63 / H 81 mm	Ø 63 / H 81 mm	Ø 96 / H 120 mm	Ø 96 / H 120 mm
Weight	0.099 kg	0.099 kg	0.206 kg	0.206 kg

Technical data halogen spotlight



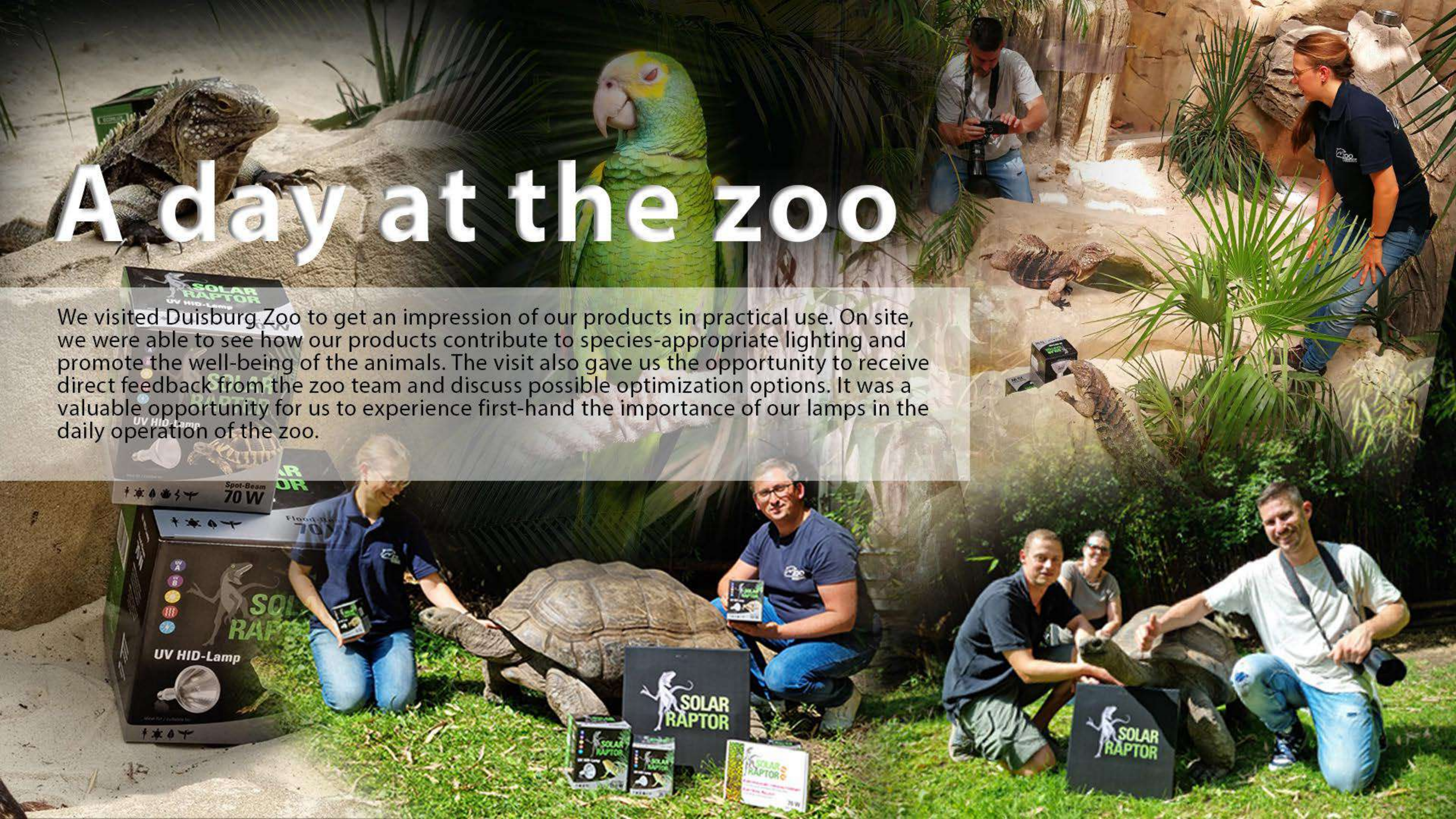
- Suitable for any E27 socket (thermostable)
- No external ballast required
- For perfect and detailed illumination
- Increases the temperature in the terrarium
- Very good color rendering index (CRI) Ra < 99

Input voltage	220 – 240 Volt AC	Ballast/Driver	not required
Mains frequency	50 – 60 Hz	Dimmable	No
Ambient temp.	-10 – +40 °C	Socket/base	E27
Product colour	Silber	Class of protection	IP 20
Housing material	Aluminium	Cover lens	Glass

For reptiles that require “pure” sunlight (i.e. the vital UV-A and UV-B rays), an additional light source, e.g. our SOLAR RAPTOR® HID or our SOLAR RAPTOR® MVL mixed light emitters, must be used.

Technical data halogen spotlight





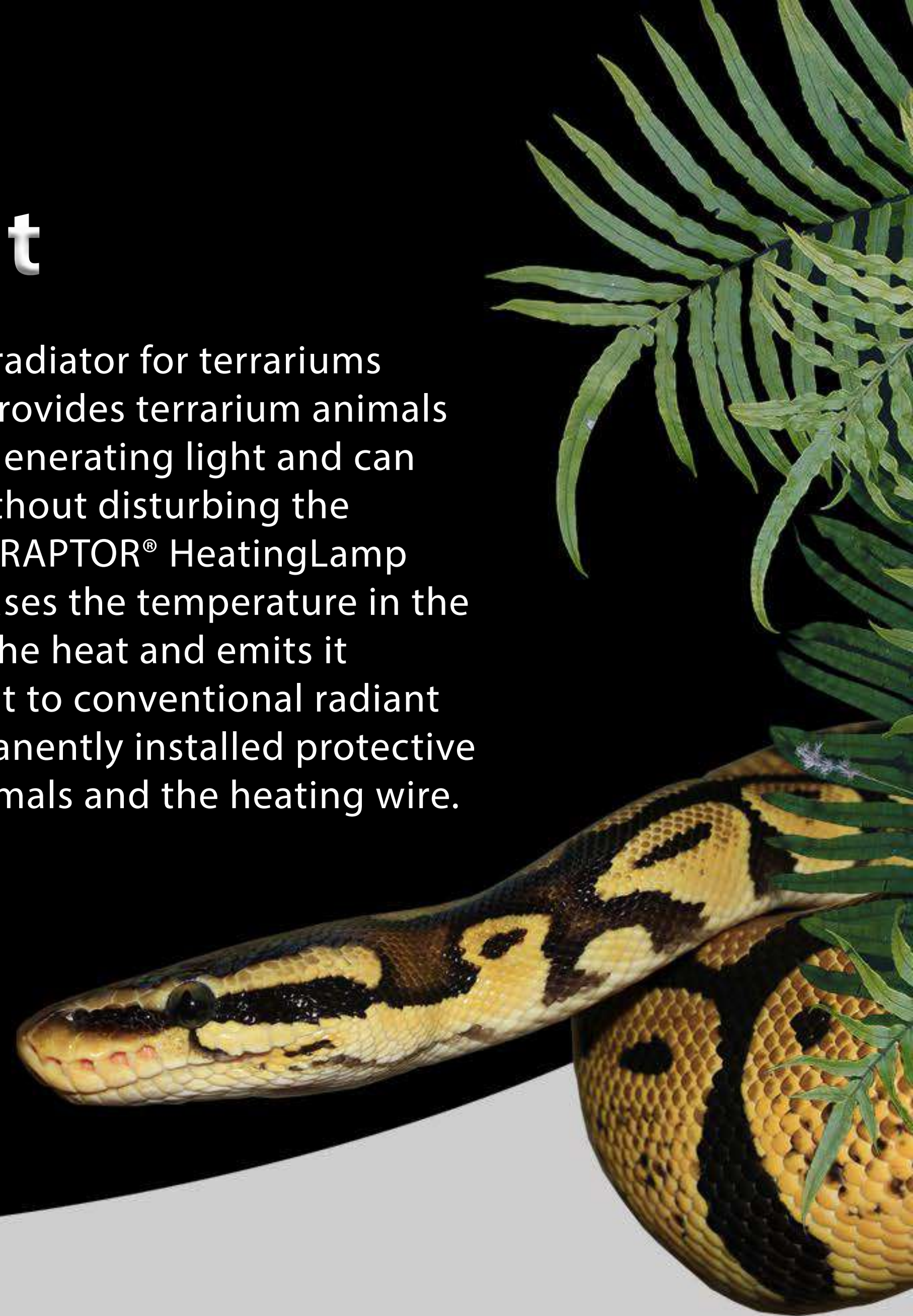
A day at the zoo

We visited Duisburg Zoo to get an impression of our products in practical use. On site, we were able to see how our products contribute to species-appropriate lighting and promote the well-being of the animals. The visit also gave us the opportunity to receive direct feedback from the zoo team and discuss possible optimization options. It was a valuable opportunity for us to experience first-hand the importance of our lamps in the daily operation of the zoo.



Heat without light

The SOLAR RAPTOR® HeatingLamp is a dark radiator for terrariums with an integrated heating wire. The lamp provides terrarium animals with pleasant warmth from above without generating light and can therefore be operated for 24 hours a day without disturbing the animals' day and night rhythms. The SOLAR RAPTOR® HeatingLamp provides a natural heat spectrum and increases the temperature in the terrarium, while the reflector concentrates the heat and emits it downwards in a targeted manner. In contrast to conventional radiant heaters, no heat is wasted upwards. A permanently installed protective grille prevents any contact between the animals and the heating wire.



SOLAR RAPTOR® HeatingLamp

- Suitable for any E27 socket (thermostable)
- Pleasant radiant heat without visible light
- With a permanently installed protective grille
- No ballast (ECG) required.

Operating voltage	220 – 240 Volt AC	Use/application	Terrariums
Operating temp.	45 – 55 °C	Socket	E27
Ambient temp.	-10 – +40 °C	Dimmable	No
Product colour	Silver	Nominal life	> 4000 h
Housing material	Aluminium	Beam angle	23.8°
Grille material	Metal	Protection class	IP 20

The radiant heater may only be operated with a suitable operating unit (E27, thermostable). Our SOLAR RAPTOR® ClampLamp (S) is ideal for this purpose.

Technical data HeatingLamp





Flexible and practical lighting solution

The SOLAR RAPTOR® ClampLamp is an operating unit for terrarium spotlights with an E27 base. The lampshade conceals unsightly spotlights and the terrarium is visually enhanced by the slim black design of the ClampLamp. The safety of the animals has also been taken into consideration, with an attachable protective grille preventing direct contact with the spotlight. The heat-resistant ceramic socket can cope with any spotlight, no matter how hot, and ensures sufficient safety, whereby a defect in the spotlight by a heat build-up is prevented thanks to the ventilation slits incorporated in the shade.

Variants

Small: Item no. 00010624

Large: Item no. 00010625



SOLAR RAPTOR® ClampLamp



Climate control in the terrarium

The SOLAR RAPTOR® Timer Controller is a switchable power strip for terrariums that enables simple climate control. The CON-T model controls the temperature, while CON-TH also regulates the humidity. Up to four lighting times can be set using a timer. The temperature sensor controls heating elements, while the CON-TH model with a hygrometer sensor also regulates the humidity via a separate slot. Presets for "Tropical" and "Desert" facilitate quick commissioning, based on average climate values of tropical rainforests and deserts.



SOLAR RAPTOR® CON-T & CON-TH





	CON-T	CON-TH
Item no.	00013005	00013006
Output power	max. 2 x 600 W	max. 3 x 400 W
Slots	2 (1 x Temperature, 1 x Time)	3 (1 x Temperature, 1 x Humidity, 1 x Time)
Temperature control range	0 – 50 °C	0 – 50 °C
Temperature range	-20 – 50 °C	20 – 50 °C
Setting range for temperature difference	1 – 15 °C	1 – 15 °C
Time format	24 Hours	24 Hours
Over/under temperature alarm value	± 3 °C of the set temperature	± 3 °C of the set temperature
Humidity control range	-	10 – 90 %

Technical data CON-T & CON-TH



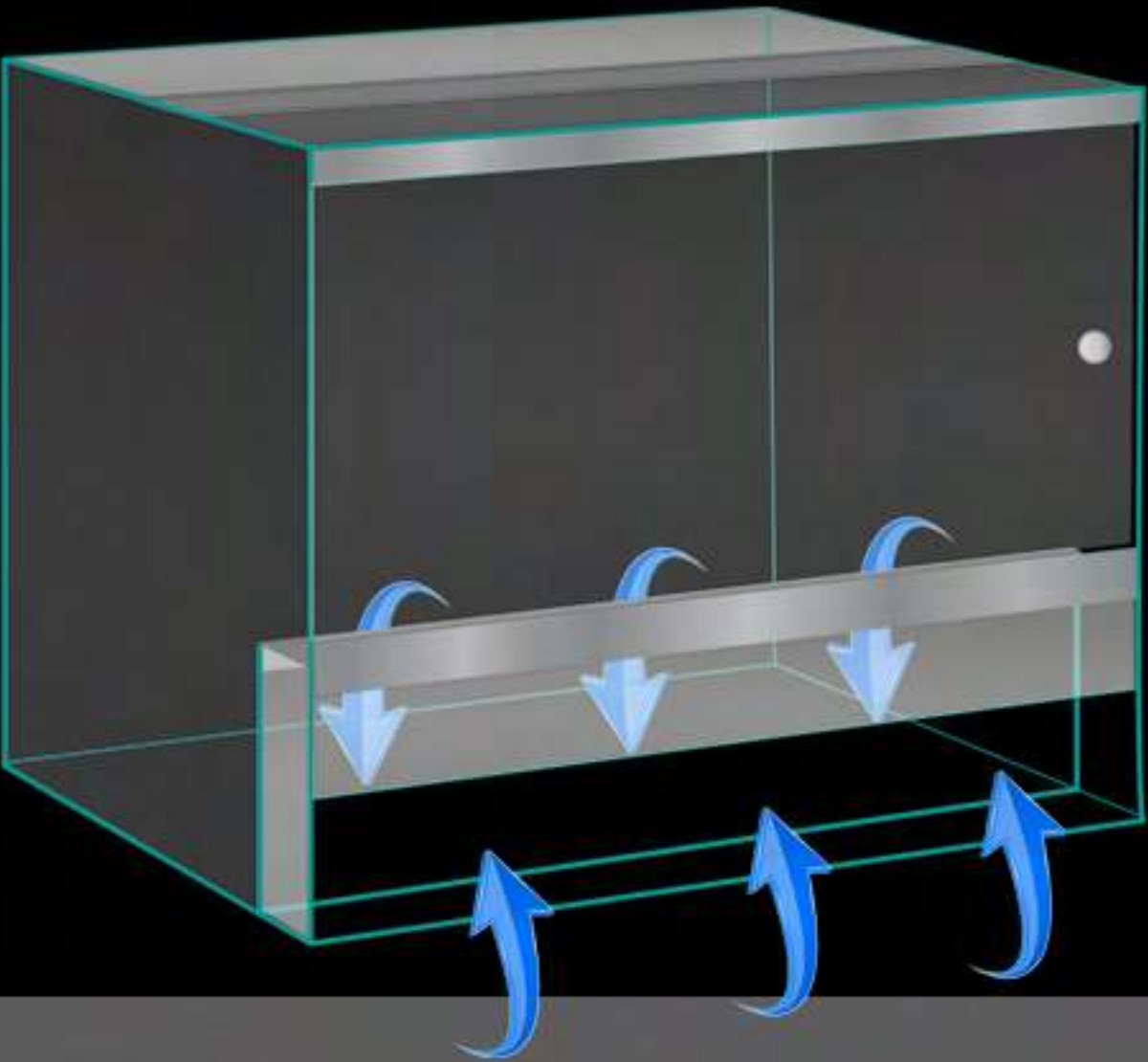
No more steamed-up windows

The SOLAR RAPTOR® HeatStrip II is a unique heating system to supplement the terrarium heating. The HeatStrip is usually attached directly to the front air inlet of the terrarium using a self-adhesive rod. This heats the incoming air and increases the air temperature in the entire terrarium. The so-called "chimney effect" also improves the air exchange. The result is a constant supply of warm fresh air for animals and plants.



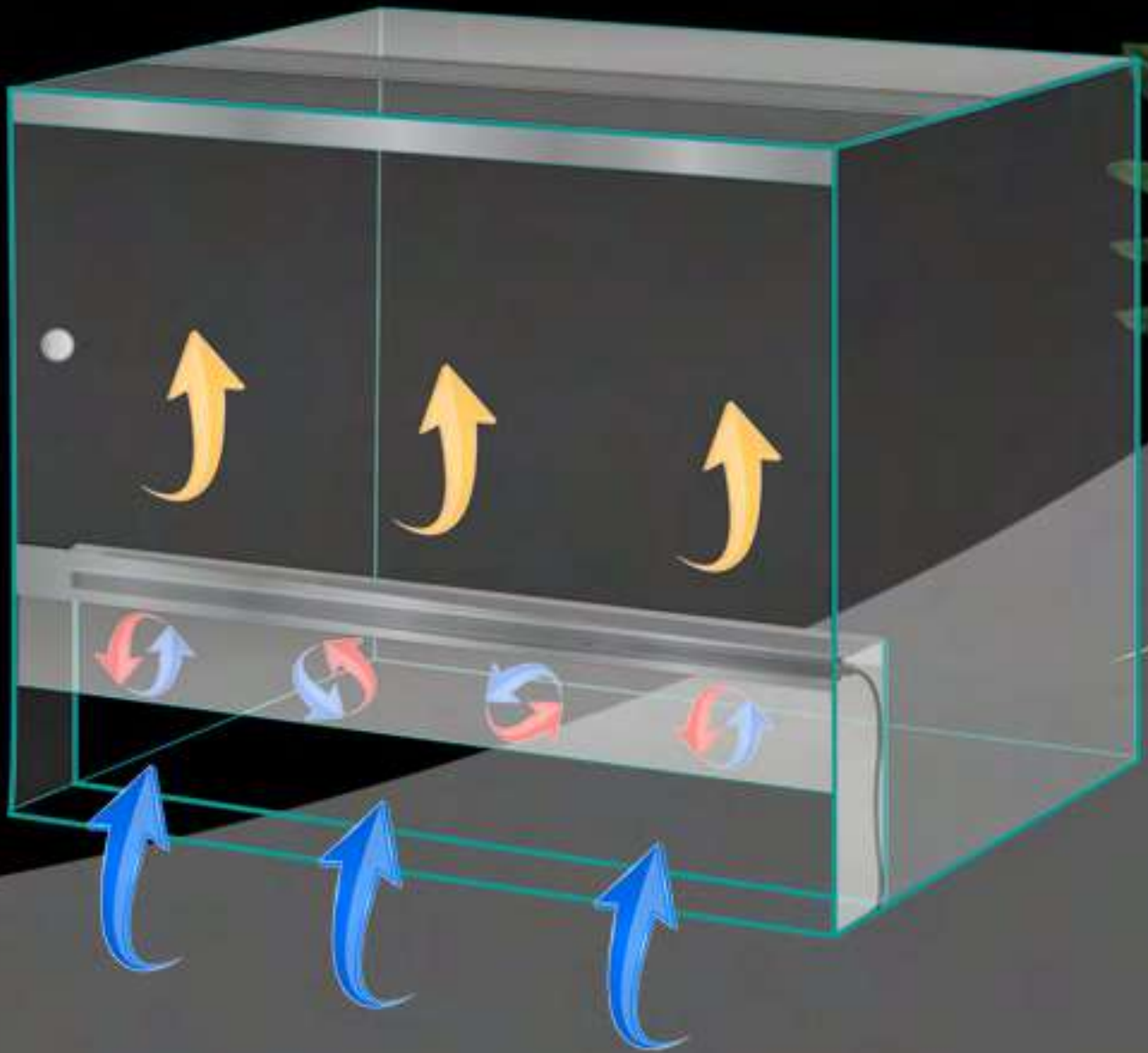
SOLAR RAPTOR® HeatStrip II

	350 mm	450 mm	750 mm	950 mm	1150 mm
Item no.	00013525	00013526	00013528	00013529	00013530
Power	6 watts	8 watts	12 watts	16 watts	19 watts
Power supply	DRV2 15 W	DRV2 15 W	DRV2 15 W	DRV2 24 W	DRV2 24 W
Size L / W / H	350 x 10.5 x 10 mm	450 x 10.5 x 10 mm	750 x 10.5 x 10 mm	950 x 10.5 x 10 mm	1150 x 10.5 x 10 mm



Cold air flows in, is heated by the HeatStrip and rises through the resulting “chimney effect” in the terrarium.

In this way, the heatstrip ensures ideal warm air circulation and distribution throughout the terrarium, while at the same time preventing the panes from misting up.



Technical data HeatStrip II

- Air heater/windshield heater
- Prevents cold draughts
- No more steamed-up windows
- Easy installation thanks to self-adhesive backing

Operating voltage	24 Volt DC	Use/application	Terrariums
Operating temp.	45 – 55 °C	Control	Yes (with CON1)
Ambient temp.	-10 – +40 °C	Dimmable	Yes (with CON1)
Product colour	Black	Nominal life	> 30.000 h
Housing material	Aluminium	Connection type	6-Pin
Cable length	1.9 m	Protection class	IP 65

The SOLAR RAPTOR® HeatStrip only serves as a supplement and is not an independent heating system. To achieve the required temperatures in the terrarium, heat lamps, heating mats etc. are required despite the HeatStrip. The HeatStrip is used to support these conventional heating systems.

Technical data HeatStrip II





LED with UV-A

The SOLAR RAPTOR® SunStrip III 35 REPTILE black edition is the perfect choice for anyone looking for a powerful LED light with UV-A for their terrarium. All SunStrip Reptile LEDs (white, red, green, blue) are dimmable and can be controlled via the CON1 control unit. In contrast to conventional fluorescent tubes, HQL or HQI lamps, the SunStrip 35 REPTILE produces no radiant heat and only a small amount of heat of its own. This not only saves energy, but also protects the terrarium from overheating and does not interfere with the fine adjustment of the terrarium climate, making the SunStrip III 35 Reptile the perfect basic lighting for any terrarium.

LED SunStrip Reptile III Bundle



	Reptile 450	Reptile 550	Reptile 750	Reptile 1150
Item no.	00013696	00013697	00013698	00013699
Power	16 watts	19 watts	26 watts	41 watts
Luminous flux	1070 lm	1260 lm	1900 lm	3280 lm
PPF	17.08 µmol/s	20.02 µmol/s	26.03 µmol/s	43.33 µmol/s
UVA Power	308 mW	395 mW	768 mW	975 mW
Colour temp.	8300 K	7950 K	8000 K	7700 K
CRI	90.7	90	91.1	90.3
Size L / W / H	450 x 49 x 15 mm	550 x 49 x 15 mm	750 x 49 x 15 mm	1150 x 49 x 15 mm
Weight	395 g	457 g	600 g	870 g

Technical data SunStrip III 35 Reptile



- SunStrip III black edition - LED with UV-A
- Bundle incl. DRV power supply unit
- Ideal basic lighting for all terrariums
- Wide range of mounting options
- Individually programmable with CON1
- Safe operation thanks to low-voltage technology

Light source	LED	Input voltage (DC)	24 V
Built-in LED types	6500K, UVA, RGB	Dimmable	Yes (with CON1)
Ambient temp.	-10 – +40 °C	Beam angle	100°
Product colour	Black	Nominal life	50,000 h
Housing material	Aluminium	Cover	PMMA
Cable length	1.9 m	Protection class	IP 65

As with all SunStrips, the profile also serves as a mounting rail for the “SunStrip Holder”. Everything is possible with the “SunStrip Holders”, from setting them down and screwing them on to suspending them from the ceiling or in existing T8 or T5 fluorescent tube sockets.

Technical data SunStrip III 35 Reptile





T5 lighting

The SOLAR RAPTOR® LightBar Pro is the perfect solution for anyone looking for powerful and reliable basic lighting for their terrarium, with a matt aluminum design that adds a modern touch to any terrarium without being too conspicuous, while quality is the top priority for the T5 lighting system: we only use high-quality components in production and the manufacturing is 100% in Germany.



SOLAR RAPTOR® LightBar Pro

	LightBar Pro 600	LightBar Pro 900	LightBar Pro 1200
Item no.	00013521	00013522	00013523
Length	614 mm	918 mm	1218 mm
Width	105 mm	105 mm	105 mm
Height	56 mm	56 mm	56 mm
Weight	1985 g	2670 g	3385 g
Usable T5 tubes	T5 14W HE T5 24W HO	T5 21W HE T5 39W HO	T5 28W HE T5 54W HO

Installing the T5 lighting system is child's play. The LightBar Pro can simply be screwed to the top of the terrarium using metal clips (included) or mounted higher up using the LightBar Pro CeilingRope wire suspension (not included). The latter type of suspension offers greater flexibility to create the perfect distance between the light and the animal.



Technical data Lightbar Pro

- Long lamp life
 - High switching stability
 - Energy-efficient thanks to cut-off technology
- Silent and flicker-free
 - Automatic safety switch-off in the event of lamp failure and at the end of lamp life

Bulb type	T5 fluorescent lamp	Input voltage	220 – 240 V
Socket	G5	Input frequency	50 – 60 Hz
Number of lamps	1	Output frequency	42 – 85 kHz
Product colour	Silver	Starting time	1 s
Housing material	Aluminium	Ambient temp.	-10 – +40 °C
Cable length	1.60 m	Protection class	IP 65

The integrated high-frequency electronic ballast operates absolutely noiselessly and flicker-free, and the outstanding properties of the material used and the special design ensure uniform and perfect light distribution.

Technical data LightBar Pro





T5 UVB Tubes

The SOLAR RAPTOR® T5 UVB Tubes are T5 fluorescent tubes that are used as basic lighting and as a simultaneous UV source in terrariums. They are therefore ideal for keeping tropical and subtropical reptiles. They provide the animals with natural light with a high proportion of UV-B radiation. Their high light output ensures generous illumination.



SOLAR RAPTOR® UVB Tubes

Power / length	UV Power 5.0	UV Power 10.0
8 W - 288 mm	00010225	00010226
14 W - 549 mm	00010227	00010228
24 W - 549 mm	00010229	00010230
21 W - 849 mm	00010231	00010232
39 W - 849 mm	00010233	00010234
28 W - 1149 mm	00010235	00010236
54 W - 1149 mm	00010237	00010238



SOLAR RAPTOR® UVB Tubes



Universal power supplies

The DRV2 power supply unit is a universal power supply unit, which means it can be used for SunStrips and all other SOLAR STINGER® and SOLAR RAPTOR® products with a 6-pin connection. Thanks to the practical plug connections, devices and cables can be combined quickly and easily. It is also possible to connect several products via a DRV Y-Cable or CON1 to just one correspondingly large DRV2.



DRV2 Power supplies

	24 W	36 W	48 W	60 W	90 W	120 W	160 W
Item no.	00012990	00012991	00012992	00013503	00013228	00013229	00013503
Power	24 watts	36 watts	48 watts	60 watts	90 watts	120 watts	160 watts
Input voltage	100 – 240 V	100 – 240 V	100 – 240 V	100 – 240 V	100 – 240 V	100 – 240 V	100 – 240 V
Output voltage	24 V / DC	24 V / DC	24 V / DC	24 V / DC	24 V / DC	24 V / DC	24 V / DC
Output current	1000 mA	1500 mA	2000 mA	2500 mA	3750 mA	5000 mA	6670 mA
Weight	140 g	190 g	205 g	370 g	370 g	550 g	610 g
Size L / W / H mm	78x35x87.8	90x54.5x71.5	90x54.5x71.5	145x58x31	145x58x31	165x65x35	175x72x35

Technical data DRV2



**SOLAR
RAPTOR**



**SOLAR
STINGER**



SunStrip Holder

With all our LED SunStrips, the top of the luminaires or light bars is designed with a uniform profile so that the SunStrips have the same mounting rail, and the right holder is selected depending on the installation requirements and options. Everything is possible with the "SunStrip Holders", from setting them down and screwing them on to suspending them from the ceiling or in existing T8 or T5 fluorescent tube sockets. Safe and ingeniously simple.



SunStrip Holder



BridgeClip Item no.:00011567



BridgeHolder 70 Item no.:00011565



T5 FlexHolder Item no.:00011638



T8 FlexHolder Item no.:00011639



BridgeHolder Item no.:00010252



ExtenderPlate Item no.:00010622



T5 Holder Item no.:00010253



Z-Holder Item no.:00010250



BridgeHolder 35 Item no.:00011564



FlatHolder Item no.:00010251



T8 Holder Item no.:00010254



PlateHolder Item no.:00010431

SunStrip Holder





SunStrip Holder Black

The five most popular SunStrip Holders join the “black edition” and are color-matched to the SOLAR STINGER® SunStrips III 35 FRESH and SOLAR RAPTOR® SunStrips III 35 REPTILE. Apart from the color, nothing has changed. All holders are inserted into the profile rails of the SunStrips and firmly connected to the LED bars by tightening a screw. Each of the SunStrip holders offers different mounting options on the aquarium. This means that a selection can be made depending on the installation requirements and options.



SunStrip Holder Black



BridgeHolder 35 Black Item no.:00013704



FlatHolder Black Item no.:00013702



PlateHolder Black Item no.:00013705



Z-Holder Black Item no.:00013703



UniversalStand Black Item no.:00013706

SunStrip Holder Black





LED for freshwater aquariums

New optimized setup in the familiar design in the third generation, the SolarStinger SunStrip remains true to itself and continues to rely on the proven flat design with rail profile. But now with increased luminosity and an optimized light spectrum. The combination of evenly distributed warm white and cool white LEDs not only brings more luminosity to the aquarium, it also ensures a natural lighting climate.



LED SunStrip III 35 fresh

	350 mm	550 mm	750 mm	950 mm
Item no.	00013433	00013435	00013347	00013439
Power	12 watts	19 watts	26 watts	33 watts
Luminous flux	1330 lm	2010 lm	2925 lm	3745 lm
PPF	20.13 µmol/s	30.63 µmol/s	43.91 µmol/s	55.58 µmol/s
Beam angle	115°	115°	115°	115°
Colour temp.	5000 K	5000 K	5000 K	5000 K
CRI	93	93	93	93
Size L / W / H	350 x 49 x 15 mm	550 x 49 x 15 mm	750 x 49 x 15 mm	950 x 49 x 15 mm
Weight	340 g	470 g	600 g	745 g



Technical data SunStrip III 35 fresh



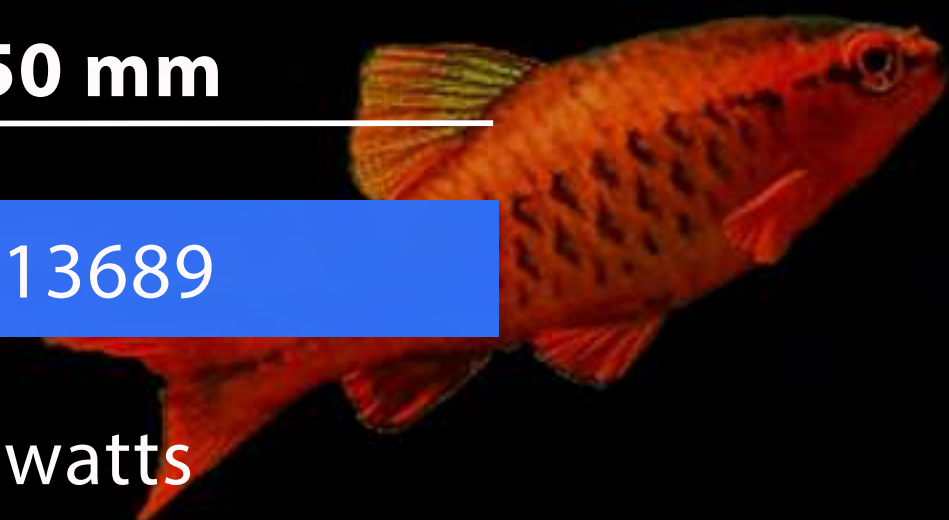
LED for freshwater aquariums

The SunStrip III 35 fresh is now also available in an elegant, matt black design. It retains all the good features of its predecessor.



LED SunStrip III 35 fresh Black Edition

	650 mm	750 mm	850 mm	1150 mm	1450 mm
Item no.	00013682	00013683	00013684	00013687	00013689
Power	23 watts	26 watts	30 watts	40 watts	51 watts
Luminous flux	2750 lm	2850 lm	3640 lm	4400 lm	5900 lm
PPF	41.1 µmol/s	43.9 µmol/s	53.8 µmol/s	67.4 µmol/s	72.4 µmol/s
Beam angle	120°	120°	120°	120°	120°
Colour temp.	5000 K	5000 K	5000 K	5000 K	5000 K
CRI	93	93	93	93	93
Size L / W / H	650 x 49 x 15 mm	750 x 49 x 15 mm	850 x 49 x 15 mm	1150 x 49 x 15 mm	1450 x 49 x 15 mm
Weight	530 g	600 g	670 g	860 g	1060 g



Technical data SunStrip III 35 fresh Black Edition



LED light for strong plant growth and brilliant colours

The spectrum of the SOLAR STINGER® SunStrip III Coral Plant is specially optimised for healthy plant growth: An increased blue component supports photosynthesis and at the same time brings out the colours in the aquarium to impressive effect. Ideal for planted tanks and shallower coral tanks.

Their special light distribution makes them particularly suitable for show tanks with a high visual impact.

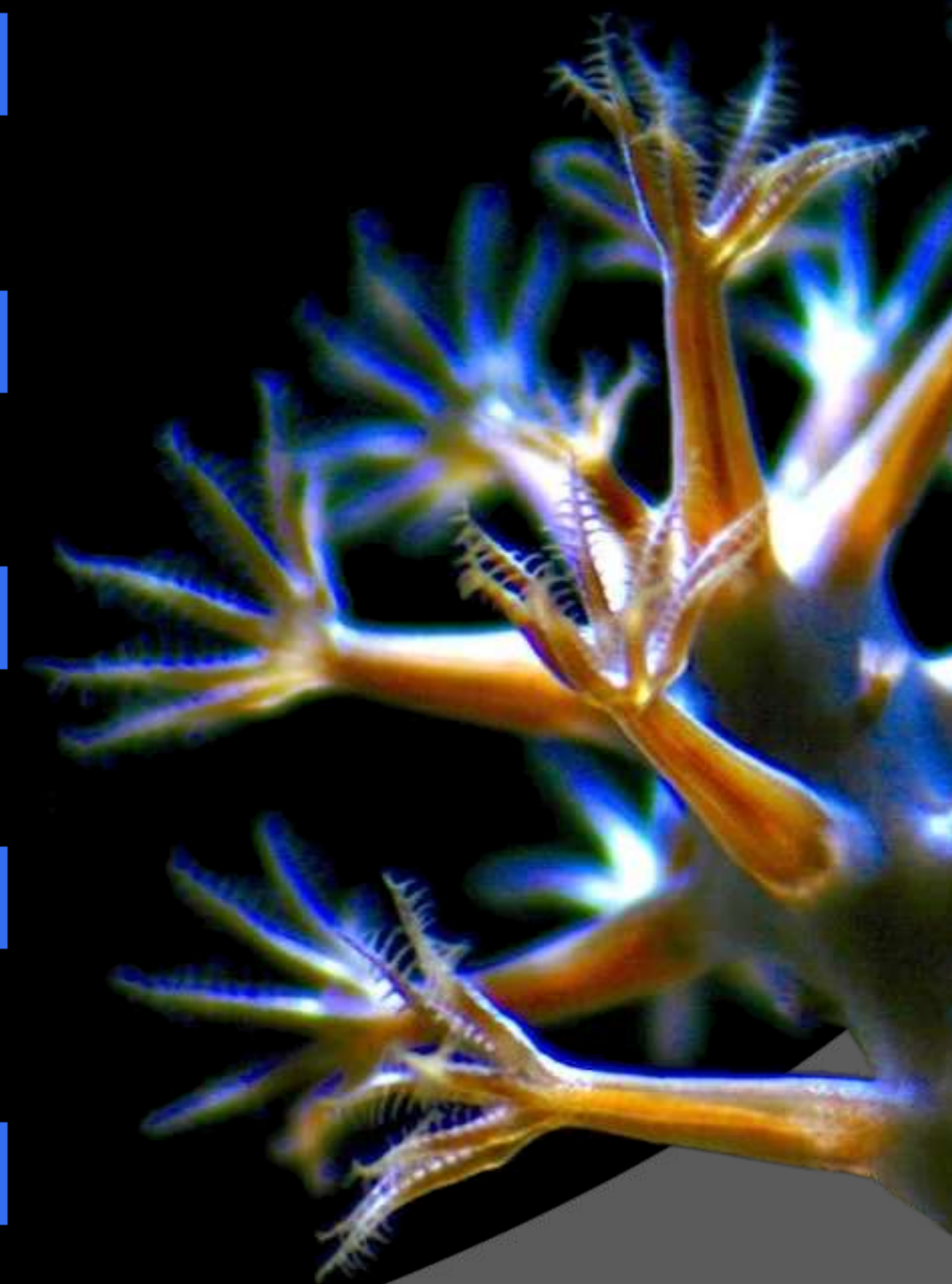


LED SunStrip III Coral Plant

	900 mm	1150 mm
Item no.	00013700	00013701
Power	18 watts	24 watts
Luminous flux	1320 lm	1700 lm
PPF	24,3 µmol/s	31,2 µmol/s
Beam angle	110°	110°
Colour temperature	_ 1)	_ 1)
Colour rendering index (CRI)	82,9	83,9
Size L x W x H	900 x 49 x 15 mm	1150 x 49 x 15 mm
Weight	700 g	885 g

1) An error-free determination of the colour temperature is not possible due to the built-in coloured LEDs. The built-in white LEDs have a colour temperature of 6500K.

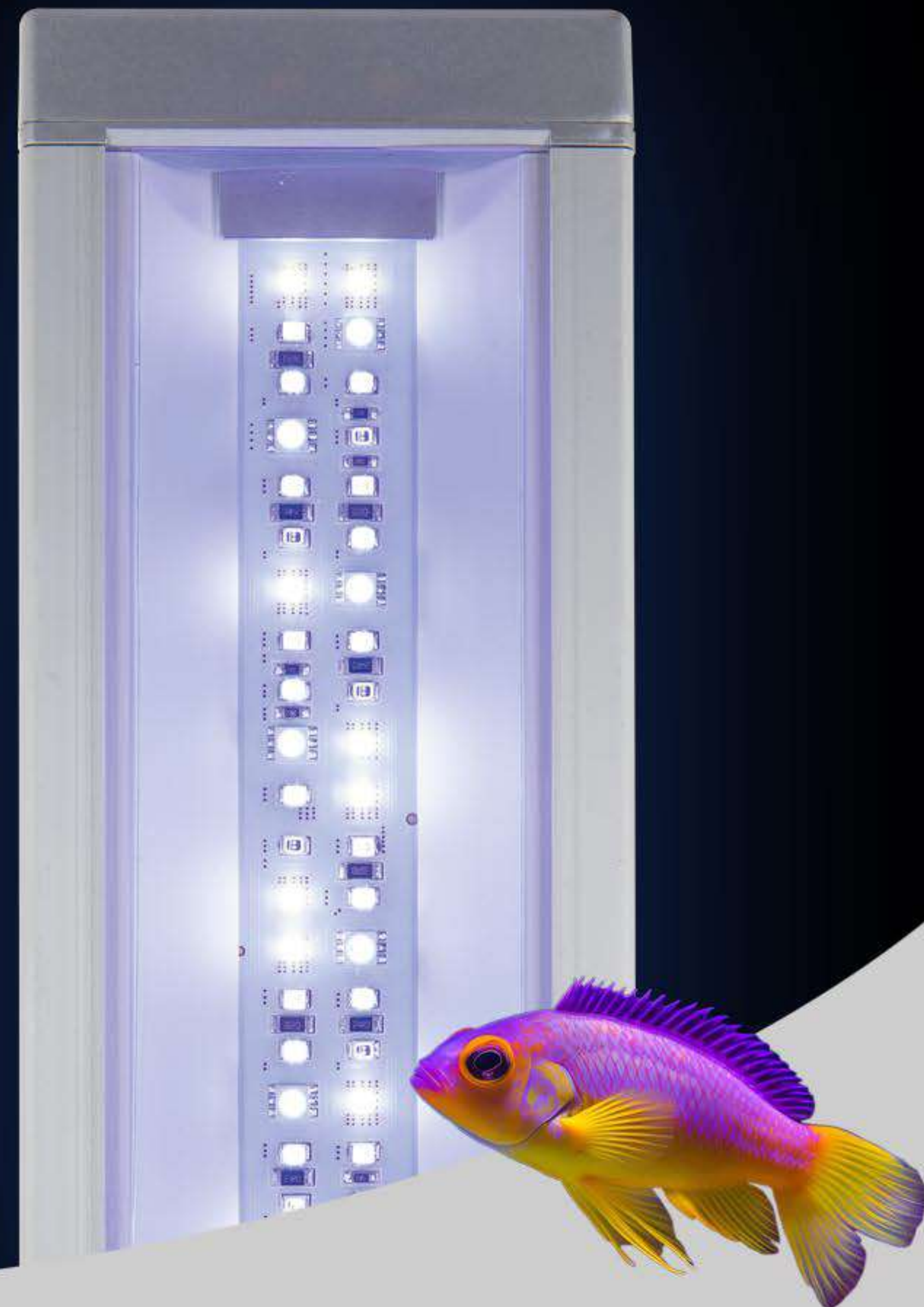
Technical Data SunStrip III Coral Plant





LED for marine aquariums

The SolarStinger SunStrip 70 Marine is an LED light for marine aquariums with a power consumption of 70 watts per meter. It combines energy efficiency, a long service life, a natural light spectrum and sophisticated functionality in a flat aluminum design. All LEDs (white, red, green, blue) are dimmable and can be controlled via the CON1 control unit. Sunrises, sunsets or moonlight can be simulated and color settings and scenes can be saved. The aluminum profile on the luminaire dissipates the heat and also serves as a mounting rail for the SunStrip Holder. These allow individual mounting above the aquarium. From plugging or screwing on to suspending from the ceiling to inserting into existing T8 or T5 fluorescent tube sockets, everything is possible - even connecting SunStrips in length.



LED SunStrip 70 Marine

	Item no.	Power	Luminous flux	Colour temp.	Size
350 mm	00011502	27 watts	860 lm	25000 K	350 x 90 x 23.6 mm
450 mm	00011503	32 watts	1450 lm	25000 K	450 x 90 x 23.6 mm
550 mm	00011504	39 watts	1590 lm	25000 K	550 x 90 x 23.6 mm
650 mm	00011505	46 watts	1608 lm	25000 K	650 x 90 x 23.6 mm
750 mm	00011506	53 watts	2054 lm	25000 K	750 x 90 x 23.6 mm
850 mm	00011507	60 watts	2450 lm	25000 K	850 x 90 x 23.6 mm
950 mm	00011508	67 watts	2450 lm	25000 K	950 x 90 x 23.6 mm
1050 mm	00011509	74 watts	2467 lm	25000 K	1050 x 90 x 23.6 mm
1250 mm	00011511	88 watts	3220 lm	25000 K	1250 x 90 x 23.6 mm
1350 mm	00011512	95 watts	3000 lm	25000 K	1350 x 90 x 23.6 mm
1450 mm	00011513	102 watts	3427 lm	25000 K	1450 x 90 x 23.6 mm



Technical data SunStrip 70 Marine